

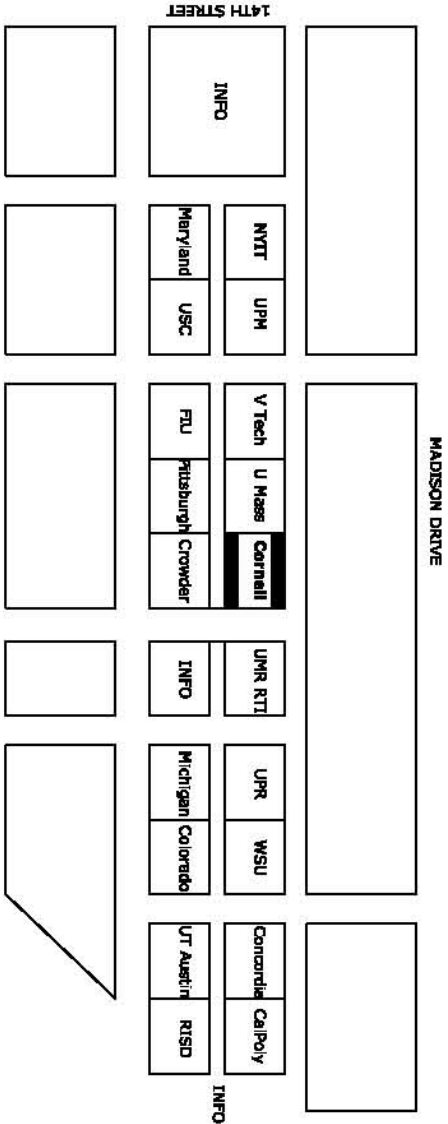
# Cornell University

Ithaca, NY

## Solar Decathlon

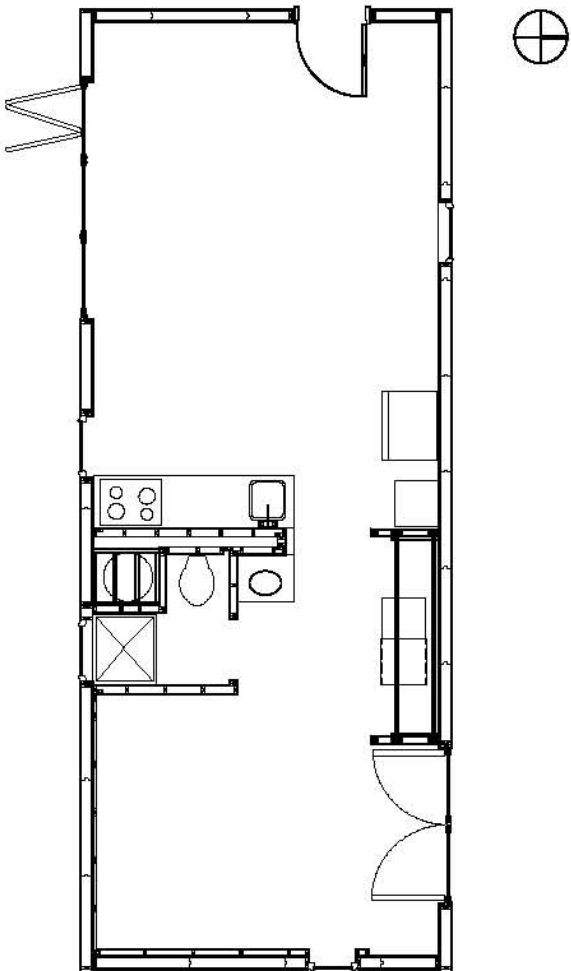
Washington D.C.

August 9, 2005



### Mission Statement

The Cornell University Solar Decathlon (CUSD) team strives to improve industry, academia, and the environment through the synthesis of innovative, marketable, and most importantly, sustainable living solutions. Sustainability transcends short sighted and transitory technological solutions. We believe sustainable design requires consideration of the short- and long-term effects of all of our actions and creations. The investigation of the historical background behind the problems we face is imperative in an effort to create an effective strategy for the future. In the past, the disjunction between technology and architectural design has hindered the growth and development of sustainability. We value the diversity of our team, and believe that the fusion of disciplines is key to the successful integration of all systems and ideas. By accomplishing our goals and seeking synergistic solutions, the CUSD team will create an integrated system for the future of sustainable design.



<div><div><div><div>DRAWING LIST</div><div>IS-01</div><div>COVER SHEET</div><div>DRAWING LIST, PROJECT TEAM, CONTACT LIST</div></div><div><div>IS-02</div><div>GENERAL NOTES, DRAWING NOTES</div></div><div><div>IS-03</div><div>ABBREVIATIONS</div></div><div><div>IS-04</div><div>SYMBOLS</div></div></div><div><div>LANDSCAPE</div><div>L-100</div><div>SITE LAYOUT PLAN</div></div><div><div>L-101</div><div>LANDSCAPE PLAN</div></div><div><div>L-102</div><div>DIAGRAM SECTIONS</div></div><div><div>L-103</div><div>SCAFFOLD SECTION</div></div><div><div>L-104</div><div>SCAFFOLD SECTION</div></div><div><div>L-105</div><div>RAINWATER CATCHMENT</div></div></div>			<div><div><div><div>PROJECT CONTACT LIST</div><div>DISCIPLINE</div><div>ARCHITECTURE</div><div>STRUCTURAL</div><div>MECHANICAL</div><div>ELECTRICAL</div><div>PLUMBING</div><div>BUSINESS</div></div><div><div>STUDENT</div><div>LARISSA KAPLAN</div><div>STEPHANIE HOROWITZ</div><div>JORDAN GOLDMAN</div><div>J. BONAVENTURA-SPARAGNA</div><div>JORDAN GOLDMAN</div><div>HILARY CORSUN</div></div><div><div>ADVISOR</div><div>NICK RAJKOVICH</div><div>EUGENE ROOD (PE CONSULTANT)</div><div>ROOD@CHENANGOENGINEERING.COM</div><div>STH8@CORNELL.EDU</div><div>JKG9@CORNELL.EDU</div><div>JKG9@CORNELL.EDU</div><div>HAC26@CORNELL.EDU</div></div></div></div>			<div><div><div><div>ELECTRICAL</div><div>E-100</div><div>ELECTRICAL NOTES</div></div><div><div>E-101</div><div>ELECTRICAL &amp; CONTROL SCHEDULE</div></div><div><div>E-110</div><div>ELECTRICAL PLAN</div></div><div><div>E-120</div><div>CONDUIT PLAN</div></div><div><div>E-130</div><div>UTILITY CLOSET ELEVATION</div></div><div><div>E-131</div><div>OUTDOOR ELECTRICAL CLOSET</div></div><div><div>E-132</div><div>OUTDOOR BATTERY CLOSET</div></div><div><div>E-140</div><div>SOLAR ARRAY DIAGRAM</div></div><div><div>E-141</div><div>POWER CONVERSION DIAGRAM</div></div><div><div>E-150</div><div>FIRE PROTECTION PLAN</div></div></div><div><div>PLUMBING</div><div>P-100</div><div>PLUMBING AND SOLAR THERMAL SCHEDULE AND NOTES</div></div><div><div>P-200</div><div>SOLAR THERMAL SCHEMATIC</div></div><div><div>P-201</div><div>SOLAR THERMAL PLAN</div></div><div><div>P-300</div><div>PLUMBING SUPPLY PLAN</div></div><div><div>P-301</div><div>PLUMBING SUPPLY PLAN DETAIL</div></div><div><div>P-302</div><div>PLUMBING DRAIN PLAN</div></div><div><div>P-303</div><div>PLUMBING DRAIN PLAN DETAIL</div></div><div><div>P-400</div><div>PLUMBING SECTION</div></div><div><div>P-500</div><div>PLUMBING ISOMETRIC</div></div><div><div>P-501</div><div>PLUMBING ISOMETRIC</div></div></div>			<div><div><div><div>DRAWING LIST</div><div>IS-01</div><div>COVER SHEET</div><div>DRAWING LIST, PROJECT TEAM, CONTACT LIST</div></div><div><div>IS-02</div><div>GENERAL NOTES, DRAWING NOTES</div></div><div><div>IS-03</div><div>ABBREVIATIONS</div></div><div><div>IS-04</div><div>SYMBOLS</div></div></div><div><div>LANDSCAPE</div><div>L-100</div><div>SITE LAYOUT PLAN</div></div><div><div>L-101</div><div>LANDSCAPE PLAN</div></div><div><div>L-102</div><div>DIAGRAM SECTIONS</div></div><div><div>L-103</div><div>SCAFFOLD SECTION</div></div><div><div>L-104</div><div>SCAFFOLD SECTION</div></div><div><div>L-105</div><div>RAINWATER CATCHMENT</div></div></div>			<div><div><div><div>ARCHITECTURAL</div><div>A-100</div><div>FLOOR PLAN DETAIL KEY</div></div><div><div>A-101</div><div>FLOOR PLAN</div></div><div><div>A-102</div><div>SOLAR ENVELOPE &amp; CONDITIONED SPACE</div></div><div><div>A-103</div><div>ROOF PLAN</div></div><div><div>A-104</div><div>ROOF DETAIL - SCUPPER</div></div><div><div>A-105</div><div>SIDING DETAIL</div></div><div><div>A-106</div><div>SIDING DETAIL</div></div><div><div>A-200</div><div>REFLECTED CEILING PLAN</div></div><div><div>A-300</div><div>EXTERIOR FINISH ELEVATIONS</div></div><div><div>A-301</div><div>EXTERIOR FINISH ELEVATION - NORTH</div></div><div><div>A-302</div><div>EXTERIOR FINISH ELEVATION - SOUTH</div></div><div><div>A-303</div><div>EXTERIOR FINISH ELEVATIONS - EAST/WEST</div></div><div><div>A-304</div><div>EXTERIOR FINISH ELEVATIONS - EAST/WEST</div></div><div><div>A-304</div><div>EXTERIOR CONSTRUCTION ELEV - NORTH</div></div><div><div>A-305</div><div>EXTERIOR CONSTRUCTION ELEV - SOUTH</div></div><div><div>A-306</div><div>EXTERIOR CONSTRUCTION ELEVS - EAST/WEST</div></div><div><div>A-310</div><div>BUILDING SECTIONS</div></div><div><div>A-311</div><div>BUILDING SECTIONS</div></div><div><div>A-312</div><div>BUILDING SECTIONS</div></div><div><div>A-313</div><div>BUILDING SECTIONS</div></div><div><div>A-314</div><div>BUILDING SECTIONS</div></div><div><div>A-315</div><div>BUILDING SECTIONS</div></div><div><div>A-400</div><div>WALL SECTION DETAILS</div></div><div><div>A-401</div><div>WALL SECTION DETAILS</div></div><div><div>A-402</div><div>CORNER DETAIL</div></div><div><div>A-403</div><div>CEILING DETAIL</div></div><div><div>A-500</div><div>WALL PARTITION TYPES &amp; DETAILS</div></div><div><div>A-501</div><div>WALL PARTITION TYPES &amp; DETAILS</div></div><div><div>A-600</div><div>APERTURE TYPES &amp; SCHEDULE</div></div><div><div>A-601</div><div>APERTURE HEAD DETAILS</div></div><div><div>A-602</div><div>APERTURE SILL DETAILS</div></div><div><div>A-700</div><div>ADA COMPLIANCE</div></div><div><div>A-800</div><div>FINISH PLAN</div></div><div><div>A-801</div><div>INTERIOR PLAN DETAILS - FRAMING</div></div><div><div>A-802</div><div>INTERIOR PLAN DETAILS - MECHANICAL CLOSET</div></div><div><div>A-900</div><div>INTERIOR FURNISHINGS PLAN</div></div></div><div><div>STRUCTURAL</div><div>S-100</div><div>CHASSIS FRAMING PLAN</div></div><div><div>S-101</div><div>PIERS AND ANCHORS</div></div><div><div>S-200</div><div>FLOOR FRAMING PLAN</div></div><div><div>S-300</div><div>ROOF FRAMING PLAN</div></div><div><div>S-301</div><div>ROOF DETAILS</div></div><div><div>S-400</div><div>PV FRAMING PLAN</div></div><div><div>S-401</div><div>PV FRAMING DETAILS</div></div><div><div>S-402</div><div>PV FRAMING SECTIONS</div></div><div><div>S-403</div><div>PV FRAMING DETAILS</div></div></div>			<div><div><div><div>MECHANICAL</div><div>M-100</div><div>MEP SCHEMATIC</div></div><div><div>M-200</div><div>MECHANICAL PLAN</div></div><div><div>M-201</div><div>MECHANICAL PLAN</div></div><div><div>M-300</div><div>MECHANICAL SECTION</div></div><div><div>M-301</div><div>MECHANICAL SECTION</div></div></div></div>			<div><div><div><div>MECHANICAL</div><div>M-100</div><div>MEP SCHEMATIC</div></div><div><div>M-200</div><div>MECHANICAL PLAN</div></div><div><div>M-201</div><div>MECHANICAL PLAN</div></div><div><div>M-300</div><div>MECHANICAL SECTION</div></div><div><div>M-301</div><div>MECHANICAL SECTION</div></div></div></div>			<div><div><div><div>MECHANICAL</div><div>M-100</div><div>MEP SCHEMATIC</div></div><div><div>M-200</div><div>MECHANICAL PLAN</div></div><div><div>M-201</div><div>MECHANICAL PLAN</div></div><div><div>M-300</div><div>MECHANICAL SECTION</div></div><div><div>M-301</div><div>MECHANICAL SECTION</div></div></div></div>			<div><div><div><div>MECHANICAL</div><div>M-100</div><div>MEP SCHEMATIC</div></div><div><div>M-200</div><div>MECHANICAL PLAN</div></div><div><div>M-201</div><div>MECHANICAL PLAN</div></div><div><div>M-300</div><div>MECHANICAL SECTION</div></div><div><div>M-301</div><div>MECHANICAL SECTION</div></div></div></div>			<div><div><div><div>MECHANICAL</div><div>M-100</div><div>MEP SCHEMATIC</div></div><div><div>M-200</div><div>MECHANICAL PLAN</div></div><div><div>M-201</div><div>MECHANICAL PLAN</div></div><div><div>M-300</div><div>MECHANICAL SECTION</div></div><div><div>M-301</div><div>MECHANICAL SECTION</div></div></div></div>			<div><div><div><div>MECHANICAL</div><div>M-100</div><div>MEP SCHEMATIC</div></div><div><div>M-200</div><div>MECHANICAL PLAN</div></div><div><div>M-201</div><div>MECHANICAL PLAN</div></div><div><div>M-300</div><div>MECHANICAL SECTION</div></div><div><div>M-301</div><div>MECHANICAL SECTION</div></div></div></div>			<div><div><div><div>MECHANICAL</div><div>M-100</div><div>MEP SCHEMATIC</div></div><div><div>M-200</div><div>MECHANICAL PLAN</div></div><div><div>M-201</div><div>MECHANICAL PLAN</div></div><div><div>M-300</div><div>MECHANICAL SECTION</div></div><div><div>M-301</div><div>MECHANICAL SECTION</div></div></div></div>			<div><div><div><div>MECHANICAL</div><div>M-100</div><div>MEP SCHEMATIC</div></div><div><div>M-200</div><div>MECHANICAL PLAN</div></div><div><div>M-201</div><div>MECHANICAL PLAN</div></div><div><div>M-300</div><div>MECHANICAL SECTION</div></div><div><div>M-301</div><div>MECHANICAL SECTION</div></div></div></div>			<div><div><div><div>MECHANICAL</div><div>M-100</div><div>MEP SCHEMATIC</div></div><div><div>M-200</div><div>MECHANICAL PLAN</div></div><div><div>M-201</div><div>MECHANICAL PLAN</div></div><div><div>M-300</div><div>MECHANICAL SECTION</div></div><div><div>M-301</div><div>MECHANICAL SECTION</div></div></div></div>			<div><div><div><div>MECHANICAL</div><div>M-100</div><div>MEP SCHEMATIC</div></div><div><div>M-200</div><div>MECHANICAL PLAN</div></div><div><div>M-201</div><div>MECHANICAL PLAN</div></div><div><div>M-300</div><div>MECHANICAL SECTION</div></div><div><div>M-301</div><div>MECHANICAL SECTION</div></div></div></div>			<div><div><div><div>MECHANICAL</div><div>M-100</div><div>MEP SCHEMATIC</div></div><div><div>M-200</div><div>MECHANICAL PLAN</div></div><div><div>M-201</div><div>MECHANICAL PLAN</div></div><div><div>M-300</div><div>MECHANICAL SECTION</div></div><div><div>M-301</div><div>MECHANICAL SECTION</div></div></div></div>			<div><div><div><div>MECHANICAL</div><div>M-100</div><div>MEP SCHEMATIC</div></div><div><div>M-200</div><div>MECHANICAL PLAN</div></div><div><div>M-201</div><div>MECHANICAL PLAN</div></div><div><div>M-300</div><div>MECHANICAL SECTION</div></div><div><div>M-301</div><div>MECHANICAL SECTION</div></div></div></div>			<div><div><div><div>MECHANICAL</div><div>M-100</div><div>MEP SCHEMATIC</div></div><div><div>M-200</div><div>MECHANICAL PLAN</div></div><div><div>M-201</div><div>MECHANICAL PLAN</div></div><div><div>M-300</div><div>MECHANICAL SECTION</div></div><div><div>M-301</div><div>MECHANICAL SECTION</div></div></div></div>			<div><div><div><div>MECHANICAL</div><div>M-100</div><div>MEP SCHEMATIC</div></div><div><div>M-200</div><div>MECHANICAL PLAN</div></div><div><div>M-201</div><div>MECHANICAL PLAN</div></div><div><div>M-300</div><div>MECHANICAL SECTION</div></div><div><div>M-301</div><div>MECHANICAL SECTION</div></div></div></div>			<div><div><div><div>MECHANICAL</div><div>M-100</div><div>MEP SCHEMATIC</div></div><div><div>M-200</div><div>MECHANICAL PLAN</div></div><div><div>M-201</div><div>MECHANICAL PLAN</div></div><div><div>M-300</div><div>MECHANICAL SECTION</div></div><div><div>M-301</div><div>MECHANICAL SECTION</div></div></div></div>			<div><div><div><div>MECHANICAL</div><div>M-100</div><div>MEP SCHEMATIC</div></div><div><div>M-200</div><div>MECHANICAL PLAN</div></div><div><div>M-201</div><div>MECHANICAL PLAN</div></div><div><div>M-300</div><div>MECHANICAL SECTION</div></div><div><div>M-301</div><div>MECHANICAL SECTION</div></div></div></div>			<div><div><div><div>MECHANICAL</div><div>M-100</div><div>MEP SCHEMATIC</div></div><div><div>M-200</div><div>MECHANICAL PLAN</div></div><div><div>M-201</div><div>MECHANICAL PLAN</div></div><div><div>M-300</div><div>MECHANICAL SECTION</div></div><div><div>M-301</div><div>MECHANICAL SECTION</div></div></div></div>			<div><div><div><div>MECHANICAL</div><div>M-100</div><div>MEP SCHEMATIC</div></div><div><div>M-200</div><div>MECHANICAL PLAN</div></div><div><div>M-201</div><div>MECHANICAL PLAN</div></div><div><div>M-300</div><div>MECHANICAL SECTION</div></div><div><div>M-301</div><div>MECHANICAL SECTION</div></div></div></div>			<div><div><div><div>MECHANICAL</div><div>M-100</div><div>MEP SCHEMATIC</div></div><div><div>M-200</div><div>MECHANICAL PLAN</div></div><div><div>M-201</div><div>MECHANICAL PLAN</div></div><div><div>M-300</div><div>MECHANICAL SECTION</div></div><div><div>M-301</div><div>MECHANICAL SECTION</div></div></div></div>			<div><div><div><div>MECHANICAL</div><div>M-100</div><div>MEP SCHEMATIC</div></div><div><div>M-200</div><div>MECHANICAL PLAN</div></div><div><div>M-201</div><div>MECHANICAL PLAN</div></div><div><div>M-300</div><div>MECHANICAL SECTION</div></div><div><div>M-301</div><div>MECHANICAL SECTION</div></div></div></div>			<div><div><div><div>MECHANICAL</div><div>M-100</div><div>MEP SCHEMATIC</div></div><div><div>M-200</div><div>MECHANICAL PLAN</div></div><div><div>M-201</div><div>MECHANICAL PLAN</div></div><div><div>M-300</div><div>MECHANICAL SECTION</div></div><div><div>M-301</div><div>MECHANICAL SECTION</div></div></div></div>			<div><div><div><div>MECHANICAL</div><div>M-100</div><div>MEP SCHEMATIC</div></div><div><div>M-200</div><div>MECHANICAL PLAN</div></div><div><div>M-201</div><div>MECHANICAL PLAN</div></div><div><div>M-300</div><div>MECHANICAL SECTION</div></div><div><div>M-301</div><div>MECHANICAL SECTION</div></div></div></div>			<div><div><div><div>MECHANICAL</div><div>M-100</div><div>MEP SCHEMATIC</div></div><div><div>M-200</div><div>MECHANICAL PLAN</div></div><div><div>M-201</div><div>MECHANICAL PLAN</div></div><div><div>M-300</div><div>MECHANICAL SECTION</div></div><div><div>M-301</div><div>MECHANICAL SECTION</div></div></div></div>			<div><div><div><div>MECHANICAL</div><div>M-100</div><div>MEP SCHEMATIC</div></div><div><div>M-200</div><div>MECHANICAL PLAN</div></div><div><div>M-201</div><div>MECHANICAL PLAN</div></div><div><div>M-300</div><div>MECHANICAL SECTION</div></div><div><div>M-301</div><div>MECHANICAL SECTION</div></div></div></div>			<div><div><div><div>MECHANICAL</div><div>M-100</div><div>MEP SCHEMATIC</div></div><div><div>M-200</div><div>MECHANICAL PLAN</div></div><div><div>M-201</div><div>MECHANICAL PLAN</div></div><div><div>M-300</div><div>MECHANICAL SECTION</div></div><div><div>M-301</div><div>MECHANICAL SECTION</div></div></div></div>			<div><div><div><div>MECHANICAL</div><div>M-100</div><div>MEP SCHEMATIC</div></div><div><div>M-200</div><div>MECHANICAL PLAN</div></div><div><div>M-201</div><div>MECHANICAL PLAN</div></div><div><div>M-300</div><div>MECHANICAL SECTION</div></div><div><div>M-301</div><div>MECHANICAL SECTION</div></div></div></div>			<div><div><div><div>MECHANICAL</div><div>M-100</div><div>MEP SCHEMATIC</div></div><div><div>M-200</div><div>MECHANICAL PLAN</div></div><div><div>M-201</div><div>MECHANICAL PLAN</div></div><div><div>M-300</div><div>MECHANICAL SECTION</div></div><div><div>M-301</div><div>MECHANICAL SECTION</div></div></div></div>			<div><div><div><div>MECHANICAL</div><div>M-100</div><div>MEP SCHEMATIC</div></div><div><div>M-200</div><div>MECHANICAL PLAN</div></div><div><div>M-201</div><div>MECHANICAL PLAN</div></div><div><div>M-300</div><div>MECHANICAL SECTION</div></div><div><div>M-301</div><div>MECHANICAL SECTION</div></div></div></div>			<div><div><div><div>MECHANICAL</div><div>M-100</div><div>MEP SCHEMATIC</div></div><div><div>M-200</div><div>MECHANICAL PLAN</div></div><div><div>M-201</div><div>MECHANICAL PLAN</div></div><div><div>M-300</div><div>MECHANICAL SECTION</div></div><div><div>M-301</div><div>MECHANICAL SECTION</div></div></div></div>			<div><div><div><div>MECHANICAL</div><div>M-100</div><div>MEP SCHEMATIC</div></div><div><div>M-200</div><div>MECHANICAL PLAN</div></div><div><div>M-201</div><div>MECHANICAL PLAN</div></div><div><div>M-300</div><div>MECHANICAL SECTION</div></div><div><div>M-301</div><div>MECHANICAL SECTION</div></div></div></div>			<div><div><div><div>MECHANICAL</div><div>M-100</div><div>MEP SCHEMATIC</div></div><div><div>M-200</div><div>MECHANICAL PLAN</div></div><div><div>M-201</div><div>MECHANICAL PLAN</div></div><div><div>M-300</div><div>MECHANICAL SECTION</div></div><div><div>M-301</div><div>MECHANICAL SECTION</div></div></div></div>			<div><div><div><div>MECHANICAL</div><div>M-100</div><div>MEP SCHEMATIC</div></div><div><div>M-200</div><div>MECHANICAL PLAN</div></div><div><div>M-201</div><div>MECHANICAL PLAN</div></div><div><div>M-300</div><div>MECHANICAL SECTION</div></div><div><div>M-301</div><div>MECHANICAL SECTION</div></div></div></div>			<div><div><div><div>MECHANICAL</div><div>M-100</div><div>MEP SCHEMATIC</div></div><div><div>M-200</div><div>MECHANICAL PLAN</div></div><div><div>M-201</div><div>MECHANICAL PLAN</div></div><div><div>M-300</div><div>MECHANICAL SECTION</div></div><div><div>M-301</div><div>MECHANICAL SECTION</div></div></div></div>			<div><div><div><div>MECHANICAL</div><div>M-100</div><div>MEP SCHEMATIC</div></div><div><div>M-200</div><div>MECHANICAL PLAN</div></div><div><div>M-201</div><div>MECHANICAL PLAN</div></div><div><div>M-300</div><div>MECHANICAL SECTION</div></div><div><div>M-301</div><div>MECHANICAL SECTION</div></div></div></div>			<div><div><div><div>MECHANICAL</div><div>M-100</div><div>MEP SCHEMATIC</div></div><div><div>M-200</div><div>MECHANICAL PLAN</div></div><div><div>M-201</div><div>MECHANICAL PLAN</div></div><div><div>M-300</div><div>MECHANICAL SECTION</div></div><div><div>M-301</div><div>MECHANICAL SECTION</div></div></div></div>			<div><div><div><div>MECHANICAL</div><div>M-100</div><div>MEP SCHEMATIC</div></div><div><div>M-200</div><div>MECHANICAL PLAN</div></div><div><div>M-201</div><div>MECHANICAL PLAN</div></div><div><div>M-300</div><div>MECHANICAL SECTION</div></div><div><div>M-301</div><div>MECHANICAL SECTION</div></div></div></div>			<div><div><div><div>MECHANICAL</div><div>M-100</div><div>MEP SCHEMATIC</div></div><div><div>M-200</div><div>MECHANICAL PLAN</div></div><div><div>M-201</div><div>MECHANICAL PLAN</div></div><div><div>M-300</div><div>MECHANICAL SECTION</div></div><div><div>M-301</div><div>MECHANICAL SECTION</div></div></div></div>			<div><div><div><div>MECHANICAL</div><div>M-100</div><div>MEP SCHEMATIC</div></div><div><div>M-200</div><div>MECHANICAL PLAN</div></div><div><div>M-201</div><div>MECHANICAL PLAN</div></div><div><div>M-300</div><div>MECHANICAL SECTION</div></div><div><div>M-301</div><div>MECHANICAL SECTION</div></div></div></div>			<div><div><div><div>MECHANICAL</div><div>M-100</div><div>MEP SCHEMATIC</div></div><div><div>M-200</div><div>MECHANICAL PLAN</div></div><div><div>M-201</div><div>MECHANICAL PLAN</div></div><div><div>M-300</div><div>MECHANICAL SECTION</div></div><div><div>M-301</div><div>MECHANICAL SECTION</div></div></div></div>			<div><div><div><div>MECHANICAL</div><div>M-100</div><div>MEP SCHEMATIC</div></div><div><div>M-200</div><div>MECHANICAL PLAN</div></div><div><div>M-201</div><div>MECHANICAL PLAN</div></div><div><div>M-300</div><div>MECHANICAL SECTION</div></div><div><div>M-301</div><div>MECHANICAL SECTION</div></div></div></div>			<div><div><div><div>MECHANICAL</div><div>M-100</div><div>MEP SCHEMATIC</div></div><div><div>M-200</div><div>MECHANICAL PLAN</div></div><div><div>M-201</div><div>MECHANICAL PLAN</div></div><div><div>M-300</div><div>MECHANICAL SECTION</div></div><div><div>M-301</div><div>MECHANICAL SECTION</div></div></div></div>			<div><div><div><div>MECHANICAL</div><div>M-100</div><div>MEP SCHEMATIC</div></div><div><div>M-200</div><div>MECHANICAL PLAN</div></div><div><div>M-201</div><div>MECHANICAL PLAN</div></div><div><div>M-300</div><div>MECHANICAL SECTION</div></div><div><div>M-301</div><div>MECHANICAL SECTION</div></div></div></div>			<div><div><div><div>MECHANICAL</div><div>M-100</div><div>MEP SCHEMATIC</div></div><div><div>M-200</div><div>MECHANICAL PLAN</div></div><div><div>M-201</div><div>MECHANICAL PLAN</div></div><div><div>M-300</div><div>MECHANICAL SECTION</div></div><div><div>M-301</div><div>MECHANICAL SECTION</div></div></div></div>			<div><div><div><div>MECHANICAL</div><div>M-100</div><div>MEP SCHEMATIC</div></div><div><div>M-200</div><div>MECHANICAL PLAN</div></div><div><div>M-201</div><div>MECHANICAL PLAN</div></div><div><div>M-300</div><div>MECHANICAL SECTION</div></div><div><div>M-301</div><div>MECHANICAL SECTION</div></div></div></div>			<div><div><div><div>MECHANICAL</div><div>M-100</div><div>MEP SCHEMATIC</div></div><div><div>M-200</div><div>MECHANICAL PLAN</div></div><div><div>M-201</div><div>MECHANICAL PLAN</div></div><div><div>M-300</div><div>MECHANICAL SECTION</div></div><div><div>M-301</div><div>MECHANICAL SECTION</div></div></div></div>			<div><div><div><div>MECHANICAL</div><div>M-100</div><div>MEP SCHEMATIC</div></div><div><div>M-200</div><div>MECHANICAL PLAN</div></div><div><div>M-201</div><div>MECHANICAL PLAN</div></div><div><div>M-300</div><div>MECHANICAL SECTION</div></div><div><div>M-301</div><div>MECHANICAL SECTION</div></div></div></div>			<div><div><div><div>MECHANICAL</div><div>M-100</div><div>MEP SCHEMATIC</div></div><div><div>M-200</div><div>MECHANICAL PLAN</div></div><div><div>M-201</div><div>MECHANICAL PLAN</div></div><div><div>M-300</div><div>MECHANICAL SECTION</div></div><div><div>M-301</div><div>MECHANICAL SECTION</div></div></div></div>			<div><div><div><div>MECHANICAL</div><div>M-100</div><div>MEP SCHEMATIC</div></div><div><div>M-200</div><div>MECHANICAL PLAN</div></div><div><div>M-201</div><div>MECHANICAL PLAN</div></div><div><div>M-300</div><div>MECHANICAL SECTION</div></div><div><div>M-301</div><div>MECHANICAL SECTION</div></div></div></div>			<div><div><div><div>MECHANICAL</div><div>M-100</div><div>MEP SCHEMATIC</div></div><div><div>M-200</div><div>MECHANICAL PLAN</div></div><div><div>M-201</div><div>MECHANICAL PLAN</div></div><div><div>M-300</div><div>MECHANICAL SECTION</div></div><div><div>M-301</div><div>MECHANICAL SECTION</div></div></div></div>			<div><div><div><div>MECHANICAL</div><div>M-100</div><div>MEP SCHEMATIC</div></div><div><div>M-200</div><div>MECHANICAL PLAN</div></div><div><div>M-201</div><div>MECHANICAL PLAN</div></div><div><div>M-300</div><div>MECHANICAL SECTION</div></div><div><div>M-301</div><div>MECHANICAL SECTION</div></div></div></div>			<div><div><div><div>MECHANICAL</div><div>M-100</div><div>MEP SCHEMATIC</div></div><div><div>M-200</div><div>MECHANICAL PLAN</div></div><div><div>M-201</div><div>MECHANICAL PLAN</div></div><div><div>M-300</div><div>MECHANICAL SECTION</div></div><div><div>M-301</div><div>MECHANICAL SECTION</div></div></div></div>			<div><div><div><div>MECHANICAL</div><div>M-100</div><div>MEP SCHEMATIC</div></div><div><div>M-200</div><div>MECHANICAL PLAN</div></div><div><div>M-201</div><div>MECHANICAL PLAN</div></div><div><div>M-300</div><div>MECHANICAL SECTION</div></div><div><div>M-301</div><div>MECHANICAL SECTION</div></div></div></div>			<div><div><div><div>MECHANICAL</div><div>M-100</div><div>MEP SCHEMATIC</div></div><div><div>M-200</div><div>MECHANICAL PLAN</div></div><div><div>M-201</div><div>MECHANICAL PLAN</div></div><div><div>M-300</div><div>MECHANICAL SECTION</div></div><div><div>M-301</div><div>MECHANICAL SECTION</div></div></div></div>			<div><div><div><div>MECHANICAL</div><div>M-100</div><div>MEP SCHEMATIC</div></div><div><div>M-200</div><div>MECHANICAL PLAN</div></div><div><div>M-201</div><div>MECHANICAL PLAN</div></div><div><div>M-300</div><div>MECHANICAL SECTION</div></div><div><div>M-301</div><div>MECHANICAL SECTION</div></div></div></div>			<div><div><div><div>MECHANICAL</div><div>M-100</div><div>MEP SCHEMATIC</div></div><div><div>M-200</div><div>MECHANICAL PLAN</div></div><div><div>M-201</div><div>MECHANICAL PLAN</div></div><div><div>M-300</div><div>MECHANICAL SECTION</div></div><div><div>M-301</div><div>MECHANICAL SECTION</div></div></div></div>			<div><div><div><div>MECHANICAL</div><div>M-100</div><div>MEP SCHEMATIC</div></div><div><div>M-200</div><div>MECHANICAL PLAN</div></div><div><div>M-201</div><div>MECHANICAL PLAN</div></div><div><div>M-300</div><div>MECHANICAL SECTION</div></div><div><div>M-301</div><div>MECHANICAL SECTION</div></div></div></div>			<div><div><div><div>MECHANICAL</div><div>M-100</div><div>MEP SCHEMATIC</div></div><div><div>M-200</div><div>MECHANICAL PLAN</div></div><div><div>M-201</div><div>MECHANICAL PLAN</div></div><div><div>M-300</div><div>MECHANICAL SECTION</div></div><div><div>M-301</div><div>MECHANICAL SECTION</div></div></div></div>			<div><div><div><div>MECHANICAL</div><div>M-100</div><div>MEP SCHEMATIC</div></div><div><div>M-200</div><div>MECHANICAL PLAN</div></div><div><div>M-201</div><div>MECHANICAL PLAN</div></div><div><div>M-300</div><div>MECHANICAL SECTION</div></div><div><div>M-301</div><div>MECHANICAL SECTION</div></div></div></div>			<div><div><div><div>MECHANICAL</div><div>M-100</div><div>MEP SCHEMATIC</div></div><div><div>M-200</div><div>MECHANICAL PLAN</div></div><div><div>M-201</div><div>MECHANICAL PLAN</div></div><div><div>M-300</div><div>MECHANICAL SECTION</div></div><div><div>M-301</div><div>MECHANICAL SECTION</div></div></div></div>			<div><div><div><div>MECHANICAL</div><div>M-100</div><div>MEP SCHEMATIC</div></div><div><div>M-200</div><div>MECHANICAL PLAN</div></div><div><div>M-201</div><div>MECHANICAL PLAN</div></div><div><div>M-300</div><div>MECHANICAL SECTION</div></div><div><div>M-301</div><div>MECHANICAL SECTION</div></div></div></div>			<div><div><div><div>MECHANICAL</div><div>M-100</div><div>MEP SCHEMATIC</div></div><div><div>M-200</div><div>MECHANICAL PLAN</div></div><div><div>M-201</div><div>MECHANICAL PLAN</div></div><div><div>M-300</div><div>MECHANICAL SECTION</div></div><div><div>M-301</div><div>MECHANICAL SECTION</div></div></div></div>			<div><div><div><div>MECHANICAL</div><div>M-100</div><div>MEP SCHEMATIC</div></div><div><div>M-200</div><div>MECHANICAL PLAN</div></div><div><div>M-201</div><div>MECHANICAL PLAN</div></div><div><div>M-300</div><div>MECHANICAL SECTION</div></div><div><div>M-301</div><div>MECHANICAL SECTION</div></div></div></div>		
--	--	--	--	--	--	--	--	--	--	--	--	---	--	--	--	--	--	--	--	--	--	--	--	--	--	--	--	--	--	--	--	--	--	--	--	--	--	--	--	--	--	--	--	--	--	--	--	--	--	--	--	--	--	--	--	--	--	--	--	--	--	--	--	--	--	--	--	--	--	--	--	--	--	--	--	--	--	--	--	--	--	--	--	--	--	--	--	--	--	--	--	--	--	--	--	--	--	--	--	--	--	--	--	--	--	--	--	--	--	--	--	--	--	--	--	--	--	--	--	--	--	--	--	--	--	--	--	--	--	--	--	--	--	--	--	--	--	--	--	--	--	--	--	--	--	--	--	--	--	--	--	--	--	--	--	--	--	--	--	--	--	--	--	--	--	--	--	--	--	--	--	--	--	--	--	--	--	--	--	--	--	--	--	--	--	--	--	--	--	--	--	--	--	--	--	--	--	--	--	--



GENERAL NOTES

GENERAL NOTES (CONT.)

GENERAL NOTES (CONT.)

CONSTRUCTION NOTES (CONT.)

1. ALL CONTRACT SCOPE OF WORK DELINEATION NOTATIONS IDENTIFIED WITHIN CONTRACT DOCUMENTS HAVE BEEN PREPARED TO SUPPLEMENT ONE ANOTHER. THE CONTRACTOR SHALL BE RESPONSIBLE FOR ALL WORK INDICATED AND INFERRED.

2. COMPLY WITH ALL REGULATORY AGENCIES, CODES AND BUILDING REQUIREMENTS, SECURED ALL NECESSARY PERMITS, REQUIRED INSPECTIONS AND SIGN-OFFS FOR ALL REQUIRED TRADES.

3. EMPLOY MEANS AND METHODS THAT MINIMIZE VIBRATION, NOISE, DUST, POLLUTANTS, AND OTHER DISTURBANCES.

4. KEEP THE JOB SITE FREE OF ALL MATERIALS AND BROOM CLEAN, AND CONTROL THE CONSTRUCTION AREA AT ALL TIMES TO PREVENT DIRT OR DUST FROM LEAVING THE JOB SITE AND INFILTRATING AREAS OUTSIDE THE PROJECT. PROVIDE CLEANUP AND REMOVAL FOR ALL TRADES UNDER HIS JURISDICTION.

5. THE TERM "FIN. FLOOR" WHERE INDICATED ON PLANS, ELEVATIONS AND SECTIONS REFERS TO THE TOP OF CARPET, STONE AND VINYL TILE. REFERENCE FINISH SCHEDULE FOR THICKNESS OF FLOOR MATERIALS.

6. PROTECT AND BE RESPONSIBLE FOR ADJACENT STRUCTURES AND SPACES WITHIN THE AREA OF OPERATION UNDER THIS CONTRACT. ANY DAMAGE OR DISTURBANCE RESULTING FROM WORK DONE UNDER THIS CONTRACT SHALL BE PROMPTLY RESTORED, REPLACED OR REPAIRED AT NO EXTRA COST TO THE OWNER.

7. DO NOT INTERRUPT EXISTING UTILITIES SERVING EXISTING FACILITIES EXCEPT WHEN AUTHORIZED IN WRITING BY THE OWNER AND ALL AUTHORITIES HAVING JURISDICTION. PROVIDE TEMPORARY SERVICES DURING CONSTRUCTION ACTIVITIES AS ACCEPTABLE TO THE OWNER AND GOVERNING AUTHORITIES.

8. NOTIFY ALL APPLICABLE UTILITY OWNERS AT LEAST 72 HOURS PRIOR TO THE START OF ANY OPERATION OBTAINING ALL NECESSARY PERMITS FROM APPROPRIATE GOVERNING AUTHORITIES, PRIOR TO DEMOLITION AND REMOVAL WORK ON THE SITE. SAID PERMIT AND CERTIFICATIONS SHALL BE DELIVERED TO AND RETAINED BY THE OWNER'S REPRESENTATIVE.

9. ALL DEBRIS AND ADDITIONAL MATERIAL SHALL BE REMOVED FROM THE SITE AND DISPOSED OF PROPERLY.

10. CONCEALED SPACES WITHIN PARTITIONS, WALLS, FLOORS, ROOFS, STAIRS, FLURRED PIPE SPACES, COLUMN ENCLOSURES, ETC., SHALL BE FIRESTOPPED.

11. ALL EXITS SHALL BE KEPT READILY ACCESSIBLE AND UNOBSTRUCTED AT ALL TIMES.

12. WORK SHALL CONFORM TO THE CONTRACT DOCUMENTS, WHICH INCLUDE THE OWNER/CONTRACTOR AGREEMENT, THESE SPECIFICATIONS AND THE DRAWINGS.

13. THESE NOTES APPLY TO THE CONTRACT DOCUMENTS.

14. THE CONTRACTOR SHALL REVIEW DOCUMENTS AND VERIFY DIMENSIONS AND FIELD CONDITIONS. ANY CONFLICTS/COMMISSIONS OR DISCREPANCIES SHALL BE REPORTED IN WRITING THREE (3) BUSINESS DAYS BEFORE RETURN OF BID.

15. IF DOCUMENTS ARE AT VARIANCE WITH ONE ANOTHER ON A PARTICULAR ITEM OR ITEMS, CONTRACTOR SHALL BASE HIS PROPOSAL ON THE BETTER QUALITY OR MORE EXPENSIVE OF THE CONDITIONS. ITEMS OR EQUIPMENT SPECIFIED UNDER ONE TRADE SHALL BE BINDING AS IF SPECIFIED UNDER ALL APPLICABLE TRADES.

16. DRAWINGS OF BASE BUILDING CONDITIONS ARE BASED ON EXISTING BUILDING DRAWINGS, AND ON LIMITED FIELD OBSERVATION. ACTUAL CONDITIONS MAY DIFFER FROM THOSE SHOWN.

17. THE CONTRACTOR SHALL FILE, OBTAIN, AND PAY FEES FOR BUILDING DEPARTMENT AND OTHER AGENCY APPROVALS AND PERMITS, CONTROLLED INSPECTIONS, AND FINAL WRITE-UPS FOR PROJECT COMPLETION. COPIES OF TRANSACTIONS ARE TO BE FORWARDED TO THE C.M. AND BUILDING MANAGEMENT PRIOR TO COMMENCING WORK.

18. THE CONTRACTOR SHALL ARRANGE FOR INSPECTIONS NECESSARY TO OBTAIN A CERTIFICATE OF OCCUPANCY.

19. WORK SHALL CONFORM TO LOCAL BUILDING CODES AND ORDINANCES AND OTHER AGENCIES HAVING JURISDICTION. THE RULES AND REGULATIONS OF OSHA SHALL BE ADHERED TO FOR THE PROJECT.

20. THE CONTRACTOR SHALL MAINTAIN FOR THE ENTIRE LENGTH OF HIS CONTRACT EXITS, EXIT LIGHTING, FIRE PROTECTIVE DEVICES AND ALARMS TO CONFORM TO LOCAL BUILDING CODE REQUIREMENTS.

21. THE CONTRACTOR SHALL BE RESPONSIBLE FOR ADEQUATELY BRACING AND PROTECTING WORK DURING CONSTRUCTION AGAINST DAMAGE, BREKAGE, COLLAPSE, DISTORTION, AND/OR MISALIGNMENT IN ACCORDANCE WITH APPLICABLE CODES, STANDARDS, AND GOOD PRACTICE.

22. THE CONTRACTOR SHALL VERIFY THAT DRAWINGS ARE THE LATEST ISSUE PRIOR TO COMMENCING CONSTRUCTION.

23. IN CASE OF CONFLICT BETWEEN ARCHITECT'S AND ENGINEER'S DRAWINGS, IN LOCATION OF MATERIALS/EQUIPMENT, NOTIFY THE C.M. IN WRITING.

24. THE CONTRACTOR SHALL NOT PROCEED WITH WORK FOR WHICH HE EXPECTS ADDITIONAL COMPENSATION BEYOND THE CONTRACT AMOUNT WITHOUT WRITTEN AUTHORIZATION FROM THE C.M. FAILURE TO OBTAIN SUCH AUTHORIZATION SHALL INVALIDATE A CLAIM FOR EXTRA COMPENSATION.

25. THE CONTRACTOR SHALL REVIEW AND COORDINATE THE SCHEDULING OF CONSTRUCTION AND SHALL SUBMIT TO THE C.M. A SCHEDULE OF WORK WITHIN FIVE DAYS AFTER AWARD OF CONTRACT FOR CONSTRUCTION. THE SCHEDULE SHALL INTEGRATE "WORK BY OTHERS" AND SHALL BE REISSUED TO THE C.M. UPON MODIFICATION. SCHEDULE SHALL INDICATE THE PHASE DURING WHICH WORK BY OTHERS SHALL BE PERFORMED, AND SHALL ALLOW SUFFICIENT TIME FOR THE WORK TO BE DONE EFFICIENTLY ON A NON-OVERTIME STATUS.

26. THE CONTRACTOR SHALL COORDINATE WORK WITH BUILDING MANAGEMENT INCLUDING BUT NOT LIMITED TO SCHEDULING TIME AND LOCATIONS FOR DELIVERIES, BUILDING ACCESS, BUILDING FACILITIES, AND USE AND CLEARANCE OF AVAILABLE ELEVATORS.

27. WORK AREAS SHALL REMAIN SECURE AND LOCKABLE DURING CONSTRUCTION. THE CONTRACTOR SHALL PROVIDE, WHERE NECESSARY, TEMPORARY LOCKABLE DOORS TO PROVIDE THE TENANT CONSTANT ACCESS TO SPACES NOT UNDER CONSTRUCTION. CONTRACTOR SHALL PROVIDE TENANT WITH KEYS FOR TEMPORARY DOORS.

28. THE CONTRACTOR SHALL, UPON AWARD OF THE CONTRACT FOR CONSTRUCTION, DETERMINE THE DELIVERY SCHEDULE OF MATERIALS NEEDED FOR THE COMPLETION OF THE WORK. CONTRACTOR SHALL PROCURE, DELIVER, AND STORE MATERIALS AND LABOR IN SUFFICIENT QUANTITY AND ON A TIMELY BASIS SO AS TO NOT IMPEDE THE COMPLETION OF THE WORK.

29. CONTRACTOR SHALL SUBMIT CONFIRMATIONS WITH DELIVERY DATES FOR ORDERS OF MATERIALS AND EQUIPMENT AND FOR LONG LEAD ITEMS. IF THE DELIVERY TIME OF ANY PRODUCT IMPEDES THE CONSTRUCTION SCHEDULE THE CONTRACTOR SHALL NOTIFY THE C.M. WITHIN BID PROPOSAL, FOR CONSTRUCTION.

30. REQUESTS FOR SUBSTITUTIONS OF SPECIFIED ITEMS SHALL BE SUBMITTED IN WRITING WITHIN BID PROPOSAL FOR CONSTRUCTION TO THE ARCHITECT, AND WILL BE CONSIDERED ONLY IF THEY PROVIDE BETTER SERVICES, HAVE A MORE ADVANTAGEOUS DELIVERY DATE, OR HAVE A LOWER PRICE PROVIDING A CREDIT TO THE TENANT AND WILL NOT SACRIFICE QUALITY. APPEARANCE OR FUNCTION, UNDER NO CIRCUMSTANCES WILL THE ARCHITECT BE REQUIRED TO PROVE THAT A PRODUCT PROPOSED FOR SUBSTITUTION IS OR IS NOT OF EQUAL QUALITY TO THE SPECIFIED PRODUCT.

31. THE CONTRACTOR SHALL PROVIDE A FULL-TIME SUPERINTENDENT OR REPRESENTATIVE AT THE JOB SITE AT ALL TIMES, WHO SHALL SUPERVISE AND DIRECT THE WORK ACCORDING TO THE SPECIFIED QUALITY STANDARDS.

32. THE CONTRACTOR SHALL APPLY, INSTALL, CONNECT, ERECT, CLEAN, AND/OR CONDITION MANUFACTURED ARTICLES, MATERIALS, AND/OR EQUIPMENT PER MANUFACTURER'S INSTRUCTIONS. IN CASE OF CONFLICT BETWEEN MANUFACTURER'S INSTRUCTIONS AND THE CONTRACT DOCUMENTS, THE CONTRACTOR SHALL OBTAIN WRITTEN CLARIFICATION FROM THE C.M. BEFORE PROCEEDING.

33. THE CONTRACTOR IS RESPONSIBLE FOR CONSTRUCTION MEANS, METHODS, TECHNIQUES, SEQUENCES AND PROCEDURES, AND FOR THE COORDINATION OF WORK, AND FOR THE WORK PERFORMED BY HIS SUBCONTRACTORS.

34. THE CONTRACTOR SHALL PATCH SURFACES TO MATCH ADJACENT IN A MANNER SUITABLE TO RECEIVE FINISHES.

35. THE CONTRACTOR SHALL PROTECT THE BUILDING PREMISES AND OCCUPANTS ON THE PROJECT SITE FROM DAMAGE. THE CONTRACTOR SHALL PROVIDE AND MAINTAIN NECESSARY COVERINGS, BOARDS, TEMPORARY PARTITIONS, AND DOORS, AS REQUIRED TO PROTECT EXISTING WORK, MATERIALS, AND FINISHES TO REMAIN AT THE JOB SITE. THE CONTRACTOR SHALL BE HELD RESPONSIBLE FOR DAMAGES ATTRIBUTABLE TO HIS OPERATION, REPAIRS, OR REPLACEMENT WITHOUT ADDITIONAL CHARGE TO THE PARTY AFFECTED.

36. SHOP DRAWINGS/SUBMITTALS ARE REQUIRED FOR BUT NOT LIMITED TO THE FOLLOWING: MILLWORK, STRUCTURAL/MISCELLANEOUS STEEL, HARDWARE, WOOD AND METAL DOORS, AND EQUIPMENT. SHOP DRAWINGS SHOULD INCLUDE DETAILED FABRICATION AND ERECTION DRAWINGS, SETTING DRAWINGS, AND MATERIAL SCHEDULES. FABRICATION SHALL BEGIN ONLY AFTER ARCHITECT'S REVIEW AND APPROVAL OF SHOP DRAWINGS.

37. SUBSTITUTIONS, REVISIONS, OR CHANGES MUST BE SUBMITTED TO ARCHITECT FOR REVIEW AND APPROVAL (IN CONFORMANCE WITH SPECIFIED PROCEDURES) PRIOR TO PURCHASE, FABRICATION, OR INSTALLATION.

38. IMMEDIATELY PRIOR TO THE OWNER'S OCCUPANCY OF ANY PHASE, THE CONTRACTOR SHALL CLEAN SURFACES OF DUST, DEBRIS, LOOSE CONSTRUCTION MATERIAL AND EQUIPMENT, AND SHALL LEAVE FLOORS VACUUMED AND CLEAN, REMAINING CONSTRUCTION MATERIAL AND EQUIPMENT, IF ANY, SHALL BE MOVED AND TEMPORARILY SECURED IN AN AREA DIRECTED BY THE OWNER.

39. SUBMIT MANUFACTURER'S LITERATURE (OPERATIONAL AND MAINTENANCE) TO ARCHITECT UPON COMPLETION AND PRIOR TO CLOSE OUT FOR EACH APPLIANCE OR PIECE OF EQUIPMENT. SUBMIT MANUFACTURER'S WRITTEN WARRANTY FOR EACH.

40. DO NOT SCALE DRAWINGS. CLARIFICATION OR INFORMATION REQUESTED BY THE CONTRACTOR SHALL BE FURNISHED, UPON WRITTEN REQUEST, BY THE C.M.

41. WOOD MATERIALS SHALL MEET APPLICABLE CODES. THEY SHALL BE FIRE RETARDANT-TREATED WOOD IN ACCORDANCE WITH LOCAL BUILDING CODES.

42. THE CONTRACTOR SHALL REVIEW REQUIRED SHOP DRAWINGS/SUBMITTALS PRIOR TO SUBMISSION TO THE ARCHITECT AND SHALL INDICATE ON THE SHOP DRAWING/SUBMITTAL THAT SUCH REVIEW HAS TAKEN PLACE. SHOP DRAWINGS SHALL BE SUBMITTED WITH ONE (1) REPRODUCIBLE YELLOW AND (1) PRINT OF EACH SHEET. EACH SUBMITTAL SHALL CONTAIN THREE (3) COPIES OF PRODUCT DATA OR SAMPLES. REVIEW OF SHOP DRAWINGS/SUBMITTALS BY ARCHITECT IS ONLY FOR GENERAL CONFORMANCE WITH THE DESIGN CONCEPT OF THE PROJECT, AND GENERAL COMPLIANCE WITH THE INFORMATION INCLUDED IN THE CONTRACT DOCUMENTS. THE CONTRACTOR SHALL BE RESPONSIBLE FOR CORRELATING AND CONFIRMING DIMENSIONS AND QUANTITIES, CHOOSING THE FABRICATION PROCESSES AND CONSTRUCTION TECHNIQUES, COORDINATING RELATED TRADES, AND PERFORMING THE WORK IN A SAFE AND SATISFACTORY MANNER. THE ARCHITECT WILL NOT REVIEW SHOP DRAWINGS/SUBMITTALS THAT DO NOT CONTAIN A SIGNED CONTRACTOR REVIEW STATEMENT AND STAMP.

43. "TYPICAL" OR "TYP" SHALL MEAN THAT THE CONDITION IS REPRESENTATIVE FOR SIMILAR CONDITIONS THROUGHOUT, UNLESS OTHERWISE NOTED. DETAILS ARE USUALLY KEYED AND NOTED "TYP" WHEN THEY FIRST OCCUR.

44. "SIMILAR" OR "SIM" MEANS COMPARABLE CHARACTERISTICS FOR THE CONDITIONS NOTED. VERIFY DIMENSIONS AND ORIENTATION ON PLANS AND ELEVATIONS.

45. DIMENSIONS AND NOTES FOR A GIVEN CONDITION ARE TYPICAL FOR SIMILAR CONDITIONS, UNLESS OTHERWISE NOTED.

46. ALL WORK IS NEW U.O.N.

1. REVIEW THE CONTRACT DOCUMENTS BEFORE COMMENCING WORK.

2. PROVIDE SPRAYED ON FIRE PROOFING TO ALL EXPOSED STRUCTURAL STEEL. (TYP.)

3. PROVIDE NEW RAILLESS ACCESS PANELS FOR ALL ELECTRICAL, HVAC, PLUMBING AND DRAINAGE EQUIPMENT (PAINT TO MATCH WALL) MOUNTED ABOVE FLOOR BASE.

4. PROVIDE CONTROL JOINT AS PER DETAILS EVERY 30 LINEAR FEET IN ALL GYP. BD. SURFACES INCLUDING WALLS, CLGS., SOFFITS, FASCIAS ETC.

5. WHERE A WALL IS SHOWN IN ALIGNMENT WITH MORE THAN ONE COLUMN OR CORE ELEMENT WHICH ARE NOT ALIGNED, THE CONTRACTOR SHALL LAY OUT PARTITIONS ALONG THE ENTIRE LENGTH ALIGNED WITH THE FURTHEST PROTECTION. UNLESS OTHERWISE NOTED, OTHER SURFACES ALONG THE ALIGNMENT SHALL BE FLURRED TO THIS LINE AFTER THE ARCHITECT IS NOTIFIED.

6. PARTITIONS AT BUILDING PERIMETER SHALL BE CENTERED ON CENTER LINE OF COLUMN OR WINDOW MULLION, UNLESS OTHERWISE NOTED.

7. BASE BUILDING COLUMN CENTER LINES (OR GRID LINES) ARE SHOWN FOR REFERENCE ONLY; VERIFY EXACT LOCATIONS IN FIELD.

8. DIMENSIONS SHOWN AS V.I.F. SHALL BE VERIFIED BY THE CONTRACTOR IN THE FIELD BY LAYING OUT THE PARTITIONS. CONTRACTOR SHALL NOTIFY ARCHITECT OF ANY DISCREPANCY IN DIMENSIONS PRIOR TO PROCEEDING WITH THE WORK IN THAT AREA.

9. NEW GYPSUM BOARD CONSTRUCTION ADJOINING EXISTING CONSTRUCTION IN THE SAME PLANE SHALL BE FLUSH WITH NO VISIBLE JOINTS, UNLESS OTHERWISE NOTED.

10. CONTRACTOR SHALL INSTALL DRYWALL FLURRING TO ACCOMMODATE DEPTH OF FIRE EXTINGUISHER CABINETS/HOSE CABINETS AND OTHER ITEMS INDICATED ON DRAWING AS BUILT INTO DRYWALL CONSTRUCTION. CONTRACTOR SHALL COORDINATE DEPTH AND SIZES OF RECESS REQUIRED WITH SPECIFIED EQUIPMENT.

11. DRYWALL FINISHING: COMPLY WITH MANUFACTURER'S PRINTED INSTRUCTIONS AND SPECIFICATIONS, EXCEPTION: COMPLY WITH MORE STRINGENT REQUIREMENTS OF GYPSUM ASSOCIATION GA-216 RECOMMENDED SPECIFICATION FOR THE APPLICATION AND FINISHING OF GYPSUM BOARD.

12. EXPOSED GYPSUM BOARD EDGES SHALL HAVE METAL TRIM, PROVIDE CORNER BEADS ALONG FULL LENGTH OF OUTSIDE CORNERS, AND J BEADS ALONG ENDS OF GYPSUM BOARD, UNLESS OTHERWISE SPECIFICALLY NOTED. TAPE, SPACKLE, AND SAND JOINTS. PARTITIONS SHALL HAVE A SMOOTH FINISH CONDITION READY FOR PAINT AND FINISH MATERIAL APPLICATION, UNLESS OTHERWISE NOTED.

13. FOR BUILT-IN WORK SURROUNDED BY PARTITION, INCLUDING BUT NOT LIMITED TO APPLIANCES AND FILES, CONTRACTOR SHALL CONFIRM THAT FLOOR SLAB DOES NOT VARY BY MORE THAN 1/4" IN 20'-0" NON-CUMULATIVE. NOTIFY ARCHITECT IF THIS TOLERANCE IS EXCEEDED.

14. CONTRACTOR SHALL COORDINATE PLACEMENT OF BLOCKING FOR MILLWORK, LIGHTS, TACKABLE BOARDS, WHITE BOARDS, HANDRAILS, ETC. PRIOR TO CLOSING WALLS.

15. PENETRATIONS IN GYPSUM BOARD CONSTRUCTION ABOVE FINISHED CEILING SHALL BE EFFECTIVELY SEALED TO PREVENT SOUND LEAKAGE AT ACOUSTICAL PARTITIONS AND AT DEMISING PARTITIONS, UNLESS OTHERWISE NOTED.

16. ALL CURVED OR ARCHED GYPSUM BD. WALLS TO BE SKIM COATED SMOOTH TO RECEIVE FINISH

17. ALL FLURRING ON BLOCK OR EXISTING WALL IS TYPE FO U.O.N.

18. PATCH & PREPARE ALL NEW AND EXISTING WALLS AFFECTED. SURFACES TO BE SMOOTH & PREPARED TO RECEIVE NEW FINISH(ES). PAINT AND INSTALL BASE TO MATCH EXISTING. PATCH FLOORING AS REQUIRED PER EXISTING STANDARDS.

19. ALL DIMENSIONS ARE TO FINISH FACE OF WALL U.O.N.

20. WALLS WHICH BUTT MULLIONS ARE CENTERED ON THE MULLION.

21. WALLS WHICH BUTT MIDDLE OF COLUMNS TO BE CENTERED ON COLUMN U.O.N.

22. CONTRACTOR TO PROVIDE 20GA. METAL BACKING PLATE IN ALL ROOM WALLS FOR WALL HUNG OFFICE FURNITURE. COORDINATE WITH FURNITURE VENDOR FOR EXACT LOCATION.

23. CONTRACTORS SHALL COORDINATE STUD LOCATIONS W/OUTLET DIMENSIONS PRIOR TO CLOSING WALLS W/G.W.B.

24. ALL GYPSUM BOARD PARTITIONS ARE FULL HEIGHT, SLAB TO SLAB U.O.N.
- 
- PROGRESS SET  
NOT ISSUED FOR  
CONSTRUCTION
- © 2005 Cornell University
- No part may be reproduced without permission  
Unauthorized edit or use of this plan is prohibited  
Do not scale drawings - verify all dimensions in field
- 
- Issue Date: 12-28-04
- CAD File: ...\\MasterSet\\Sheets\\S-02.dwg
- Drawing Name
- GENERAL NOTES  
DRAWING NOTES
- Drawing Number
- IS-02

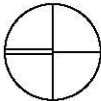
\_\_\_\_\_

[illegible]

# Cornell University Solar Decathlon

Issued/Revisions No. Description	Date
<u>A</u> Issued to Winterpanel, inc.	11/09/04
<u>A</u> Issued to Winterpanel, inc.	12/28/04
<u>A</u> Issued to Murus	2/2/05
<u>A</u> Issued to Solar Decathlon	2/8/05
<u>A</u> Issued to Solar Decathlon	6/30/05
<u>A</u> Issued to Solar Decathlon	8/9/05

## Job North



NOT ISSUED FOR  
CONSTRUCTION  
PROGRESS SET

© 2005 Cornell University  
No part may be reproduced without permission  
Unauthorized edit or use of this plan is prohibited  
Do not scale drawings - verify all dimensions in field



Issue Date: 12-28-04

CAD File: ...\\MasterSet\\Sheets\\IS-03.dwg

**Drawing Name**

## ABBREVIATIONS

### Drawing Number

# 3-05-I



Issued/Revisions	
No.	Description
1	Issued to Winterpanel, Inc.
2	Issued to Winterpanel, Inc.
3	Issued to Murus
4	Issued to Solar Decathlon
5	Issued to Solar Decathlon
6	Issued to Solar Decathlon
7	Issued to Solar Decathlon

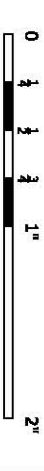
Issued/Revisions	
No.	Description
1	Issued to Winterpanel, Inc.
2	Issued to Winterpanel, Inc.
3	Issued to Murus
4	Issued to Solar Decathlon
5	Issued to Solar Decathlon
6	Issued to Solar Decathlon
7	Issued to Solar Decathlon

Issued/Revisions	
No.	Description
1	Issued to Winterpanel, Inc.
2	Issued to Winterpanel, Inc.
3	Issued to Murus
4	Issued to Solar Decathlon
5	Issued to Solar Decathlon
6	Issued to Solar Decathlon
7	Issued to Solar Decathlon



© 2005 Cornell University

No part may be reproduced without permission  
Unauthorized edit or use of this plan is prohibited  
Do not scale drawings - verify all dimensions in field

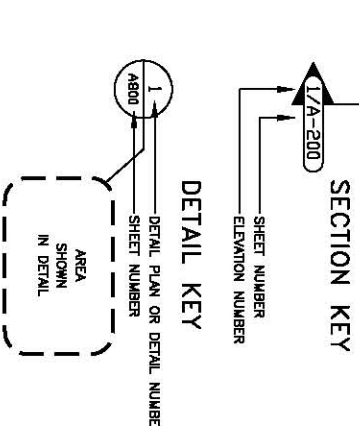
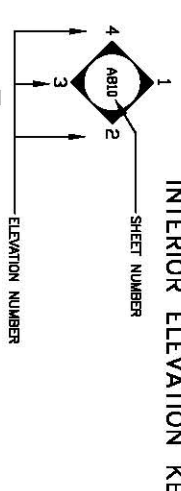
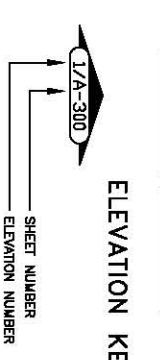
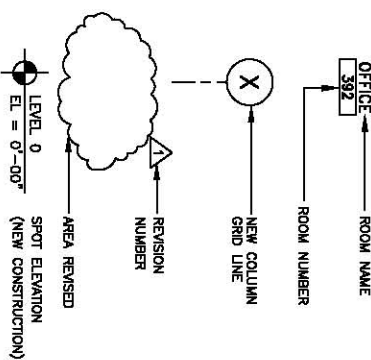


Issue Date:	12-28-04
CAD File:	...\MasterSet\Sheets\IS-04.dwg

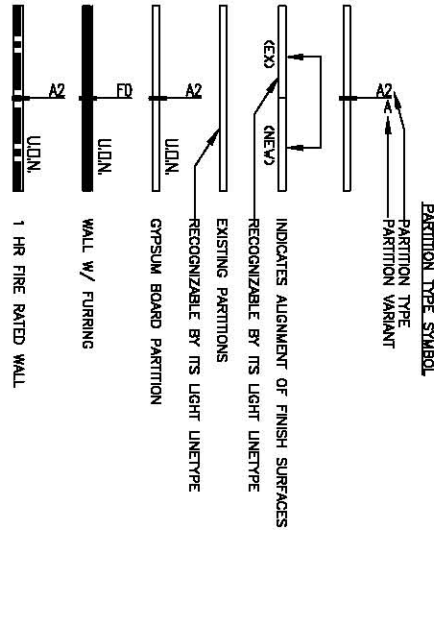
Drawing Name  
**SYMBOLS**

Drawing Number  
**IS-04**

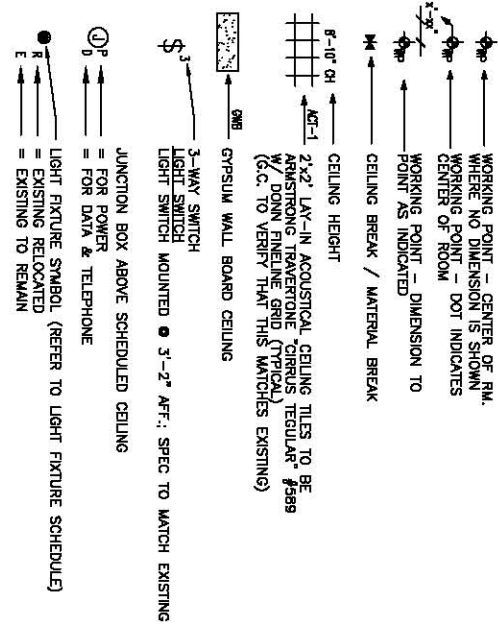
DRAWING SYMBOLS



CONSTRUCTION LEGEND



REFLECTED CEILING LEGEND

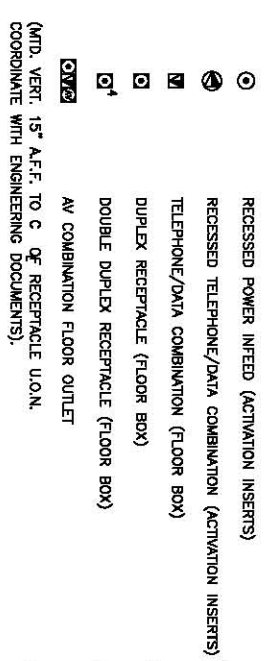


FIRE SAFETY DEVICES



POWER/COMMUNICATIONS LEGEND & NOTES

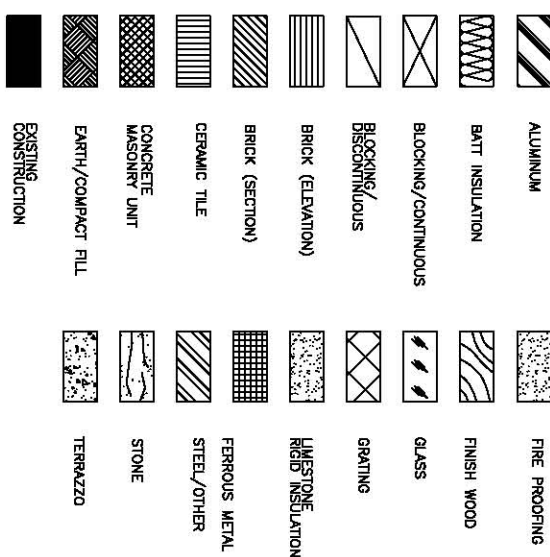
FLOOR MOUNTED AND CORE DRILLED RECEPTACLES  
(COORDINATE WITH ENGINEERING DOCUMENTS)



MECHANICAL LEGEND

SEE MEP DRAWINGS  
AIR SUPPLY FITTURE. SEE HVAC DWGS.  
RETURN AIR FITTURE. SEE HVAC DWGS.  
LINEAR DIFFUSER. SEE HVAC DWGS.

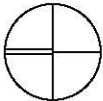
MATERIAL SYMBOLS



Cornell University  
Solar Decathlon

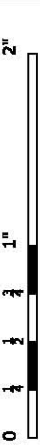
Issued/Revisions No.	Description	Date
A	Issued to Winterpanel, Inc.	11/09/04
A	Issued to Winterpanel, Inc.	12/28/04
A	Issued to Murus	2/2/05
A	Issued to Solar Decathlon	2/8/05
A	Issued to Solar Decathlon	6/30/05
A	Issued to Solar Decathlon	8/9/05

Job North



PROGRESS SET  
NOT ISSUED FOR  
CONSTRUCTION

© 2005 Cornell University  
No part may be reproduced without permission  
Unauthorized edit or use of this plan is prohibited  
Do not scale drawings - verify all dimensions in field



Issue Date: 9 AUGUST 2005

CAD File:

Drawing Name

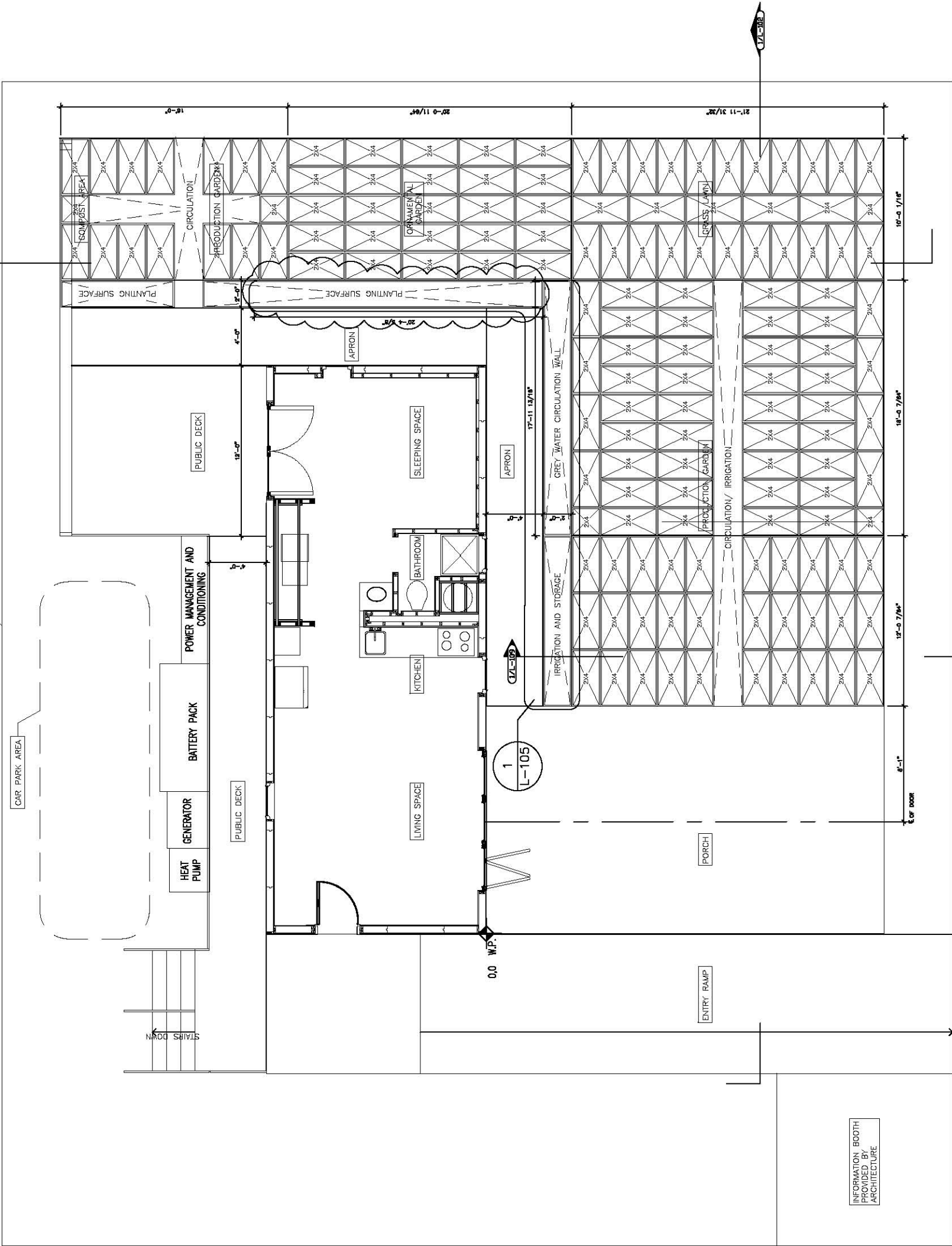
SITE LAYOUT PLAN

Drawing Number

L-100

1 TRAY LAYOUT  
SCALE: 1/8" = 1'-0"

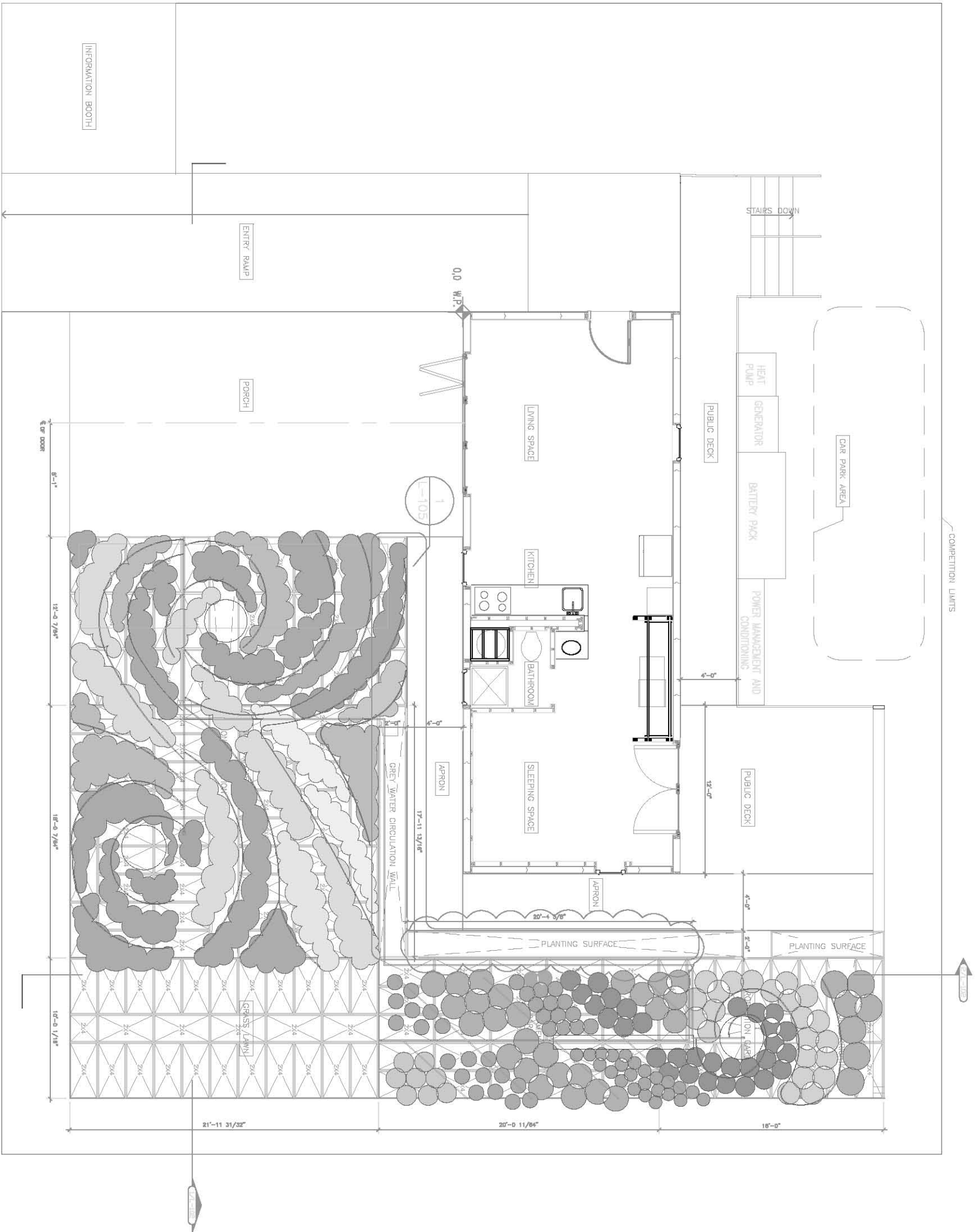
INFORMATION BOOTH  
PROVIDED BY  
ARCHITECTURE



Issued/Revisions No.	Description	Date
1	Issued to Winterpanel, Inc.	11/09/04
2	Issued to Winterpanel, Inc.	12/28/04
3	Issued to Murus	2/2/05
4	Issued to Solar Decathlon	2/8/05
5	Issued to Solar Decathlon	6/30/05
6	Issued to Solar Decathlon	8/9/05

[illegible]

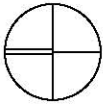
7-10



Cornell University  
Solar Decathlon

Issued/Revisions No.	Description	Date
△	Issued to Winterpanel, Inc.	11/09/04
△	Issued to Winterpanel, Inc.	12/28/04
△	Issued to Murus	2/2/05
△	Issued to Solar Decathlon	2/8/05
△	Issued to Solar Decathlon	6/30/05
△	Issued to Solar Decathlon	8/9/05

Job North



CONSTRUCTION  
NOT ISSUED FOR  
PROGRESS SET

© 2005 Cornell University  
No part may be reproduced without permission  
Unauthorized edit or use of this plan is prohibited  
Do not scale drawings - verify all dimensions in field



Issue Date: 9 AUGUST 2005

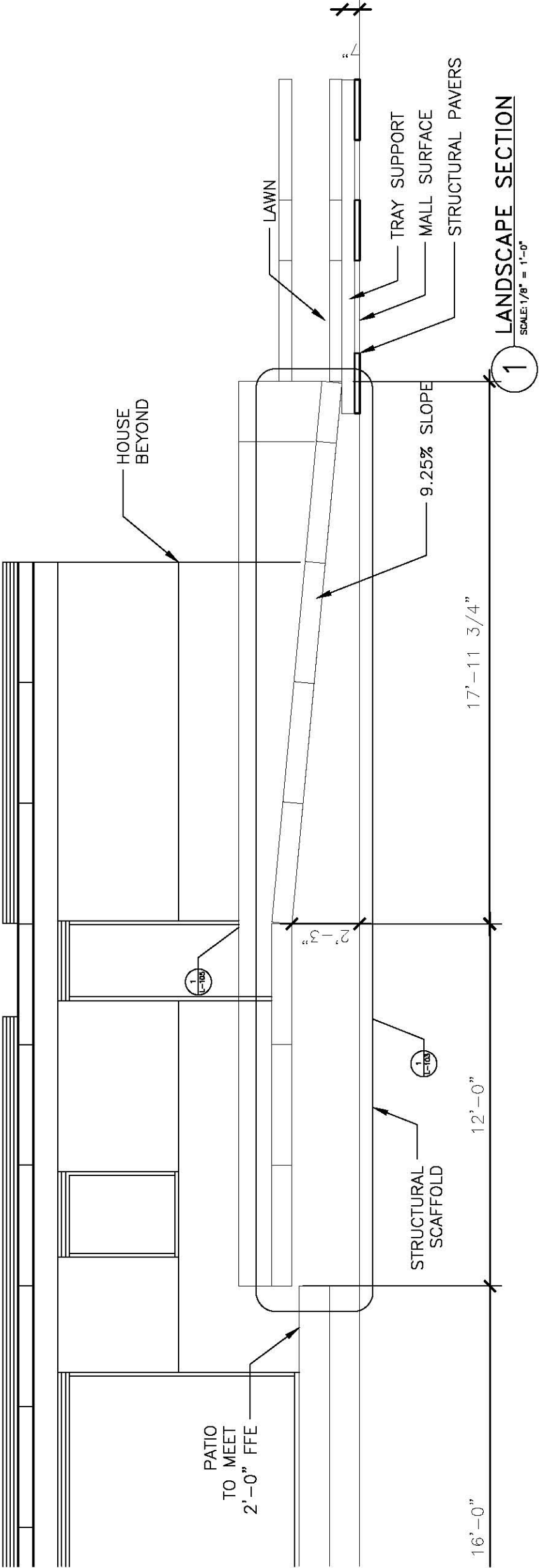
CAD File:

Drawing Name

DIAGRAM SECTIONS

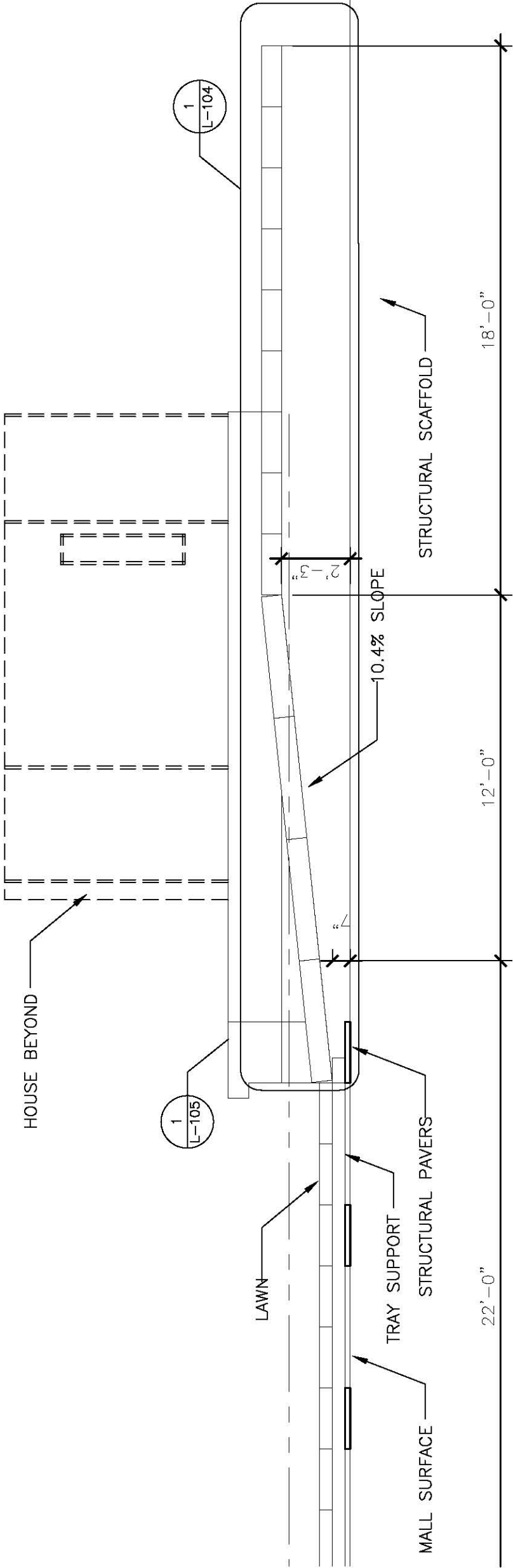
Drawing Number

L-102



1 LANDSCAPE SECTION

SCALE: 1/8" = 1'-0"



2 LANDSCAPE SECTION

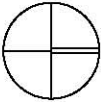
SCALE: 1/8" = 1'-0"



Cornell University  
Solar Decathlon

Issued/Revisions No. Description	Date
<div>Δ</div> Issued to Winterpanel, Inc.	11/09/04
<div>Δ</div> Issued to Winterpanel, Inc.	12/28/04
<div>Δ</div> Issued to Murus	2/2/05
<div>Δ</div> Issued to Solar Decathlon	2/8/05
<div>Δ</div> Issued to Solar Decathlon	6/30/05
<div>Δ</div> Issued to Solar Decathlon	8/9/05

Job North



PROGRES SET  
NOT ISSUED FOR  
CONSTRUCTION

© 2005 Cornell University  
No part may be reproduced without permission  
Unauthorized edit or use of this plan is prohibited  
Do not scale drawings - Verify all dimensions in field



Issue Date: 9 AUGUST 2005

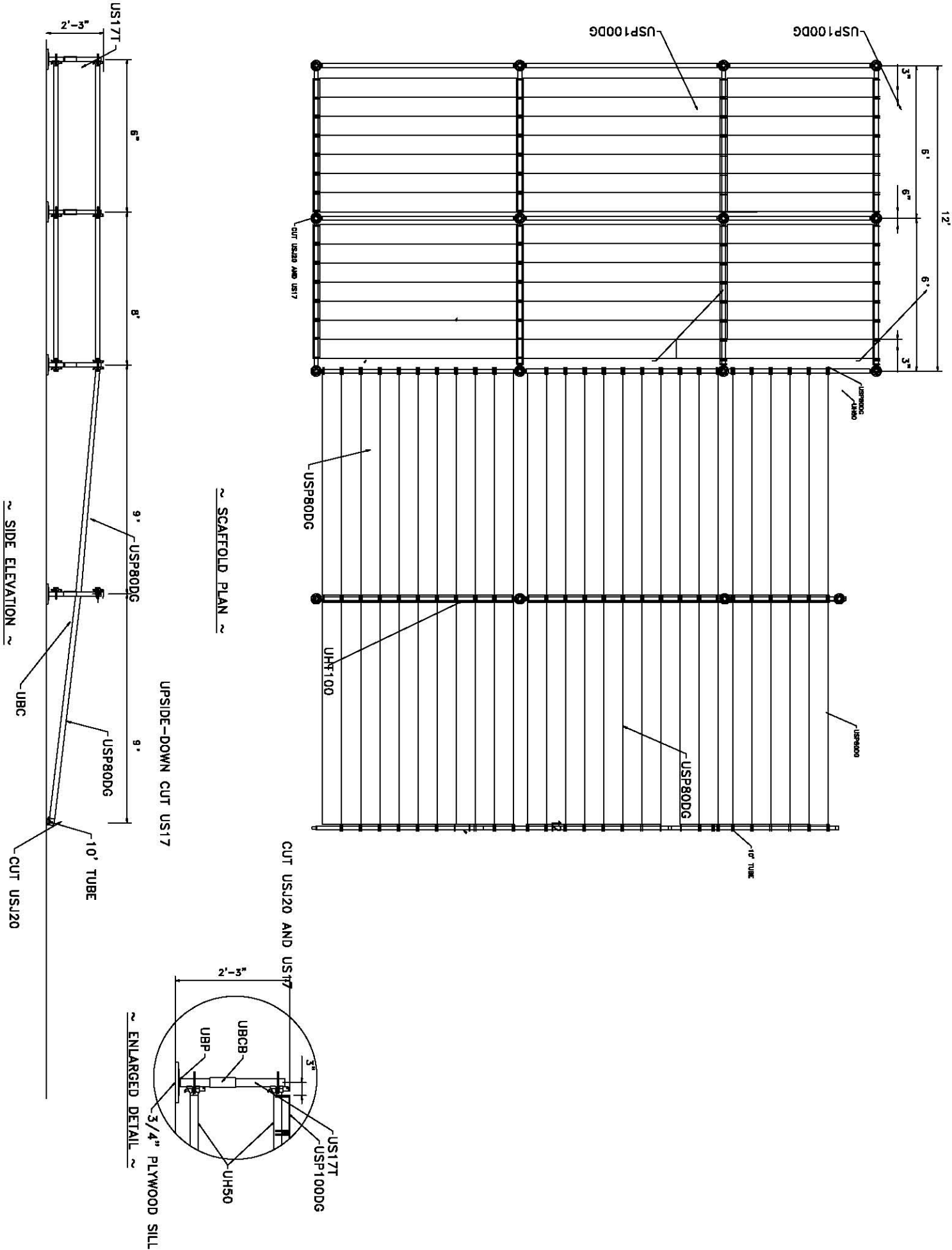
CAD File:

Drawing Name

SCAFFOLD SECTION

Drawing Number

L-103



**UNIVERSAL MANUFACTURING CORP.**  
380 W. NEW CASTLE ST. ZEALEND, PA 16803  
PHONE: (724) 458-4200 FAX: (724) 458-4578

CORNELL PLANTING TRAY  
SCAFFOLD SUPPORT

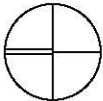
DESIGNED BY: JLC	DRAWN BY: JLC
DATE: 3-14-2005	REV. DATE:
SHEET: 1 OF 1	SCALE: 3/4"=1'-0"

PROJECT: NCS-380

Cornell University  
Solar Decathlon

Issued/Revisions No.	Description	Date
△	Issued to Winterpanel, Inc.	11/09/04
△	Issued to Winterpanel, Inc.	12/28/04
△	Issued to Murus	2/2/05
△	Issued to Solar Decathlon	2/8/05
△	Issued to Solar Decathlon	6/30/05
△	Issued to Solar Decathlon	8/9/05

Job North



PROGRESS SET  
NOT ISSUED FOR  
CONSTRUCTION

© 2005 Cornell University  
No part may be reproduced without permission  
Unauthorized edit or use of this plan is prohibited  
Do not scale drawings - verify all dimensions in field



Issue Date: 9 AUGUST 2005

CAD File:

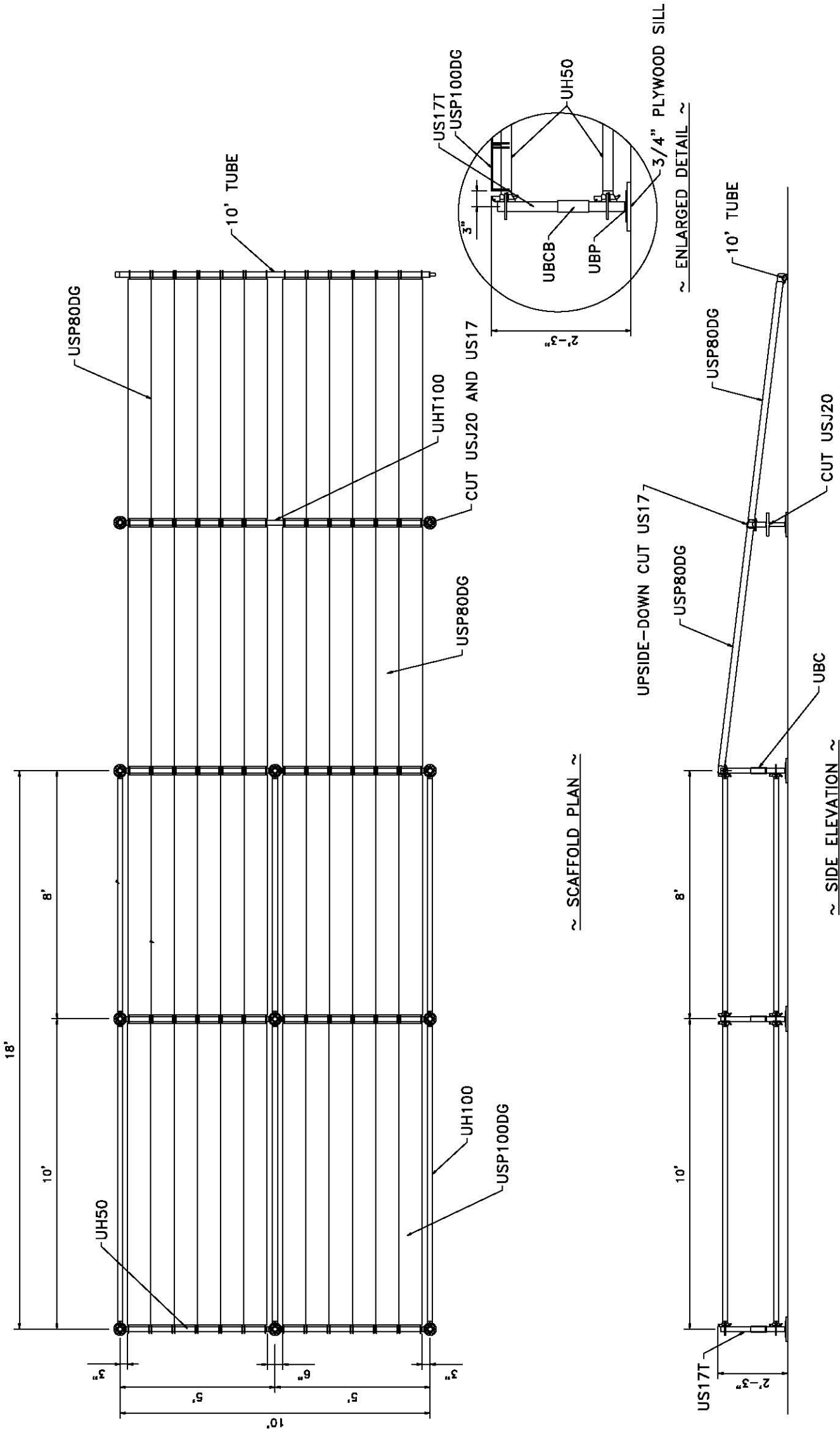
Drawing Name


SCAFFOLD SECTION

Drawing Number

L-104

1 SCAFFOLD SECTION  
SCALE: NOT TO SCALE





**UNIVERSAL MANUFACTURING CORP.**  
550 W. NEW CASTLE ST. ZENITHOPOL, PA 16063  
PHONE: (724) 452-8300 FAX: (724) 452-0578

CORNELL PLANTING TRAY  
SCAFFOLD SUPPORT

DRAWING NUMBER: NES-380-R1	DRAWN: JLC	CHECKED:
SHEET: 1 OF 1	DATE: 3-14-2005	REV. DATE:
SCALE: 3/4"=1'-0"		JOB CODE: NES-380